



Find out our video



### A LEADING GRADUATE SCHOOL OF ENGINEERING WITH 8 CAMPUSES

Arts et Métiers ParisTech is one of the oldest engineering schools in France. 85,000 engineers have graduated from the school since its creation in 1780. Its mission is to train engineers with a multidisciplinary approach in 3 main fields: Health, Transportation and Energy. Arts et Métiers ParisTech has very close ties with industry in France thanks to its 8 campuses and 3 institutes spread around France.

### AMBITIOUS PEDAGOGICAL OBJECTIVES

The objectives are to formalise the knowledge based on a scientific approach about design, innovation, production planning and manufacturing systems. The KIMP program provides training for further PhD studies, research activities or positions in industry as an expert with having an international experience by working in an international multi-cultural context.

### INTERNSHIP FRIENDLY PROGRAMME

It consists of one semester of courses and one semester of Master Thesis at full time in order to carry out the master thesis in a lab (industry or university).

The first semester is split in two quarters, one quarter of core courses and one quarter of specialised courses.

#### 4 core courses in Knowledge Integration in Mechanical Production

- Methods, models and tools for integration: Manufacturing Process, Product Modelling, Process Planning, Manufacturing Resources
- Supply Chain Management
- Risk Management and Decision Science
- French Language and Culture

#### 4 courses specialized in Advanced Production System

- Dynamical Modelling
- Control of dynamical systems
- Advanced Mechatronic
- Innovations in domestic and industrial robotic

### EXCITING CAREER PROSPECTS

**Careers in industry:** Research and development department, Design department, Quality department, Production department in manufacturing industries

**Positions:** Manager in all aforementioned sectors, PhD in Mechanical engineering or automatic control

**Careers in academia**

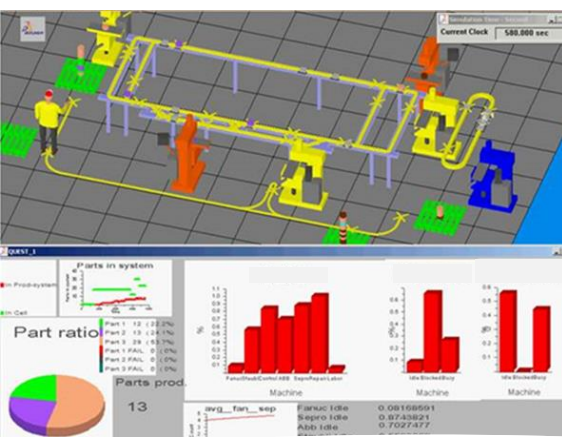
### WORLD LEADING PARTNERS

#### Academic Partners

Royal Institute of Technology (Sweden),  
Linköping University (Sweden),  
University of Teheran (Iran)



#### Industrial Partners



Learn more:

> Programme Coordinator  
adel.olabi@ensam.eu

> International Office Lille  
vianney.delepoux@ensam.eu

> International Admissions  
admissions@ensam.eu



[Find out our video](#)



### A VERY ACTIVE REGION IN TRAINING AND RESEARCH

- 30 higher education institutions
- 130,000 students
- 4,600 researchers and teachers
- 3,000 PhD students



### USEFUL WEBSITES

- To find out more about France, its educational system and academic life: [www.campusfrance.org](http://www.campusfrance.org)
- To find out more about student life in France: [www.cnous.fr](http://www.cnous.fr)
- The Regional Student Center can help you: [www.crous-lille.fr](http://www.crous-lille.fr)

### AN ATTRACTIVE ENVIRONMENT WITH AN ATTRACTIVE TUITION FEE

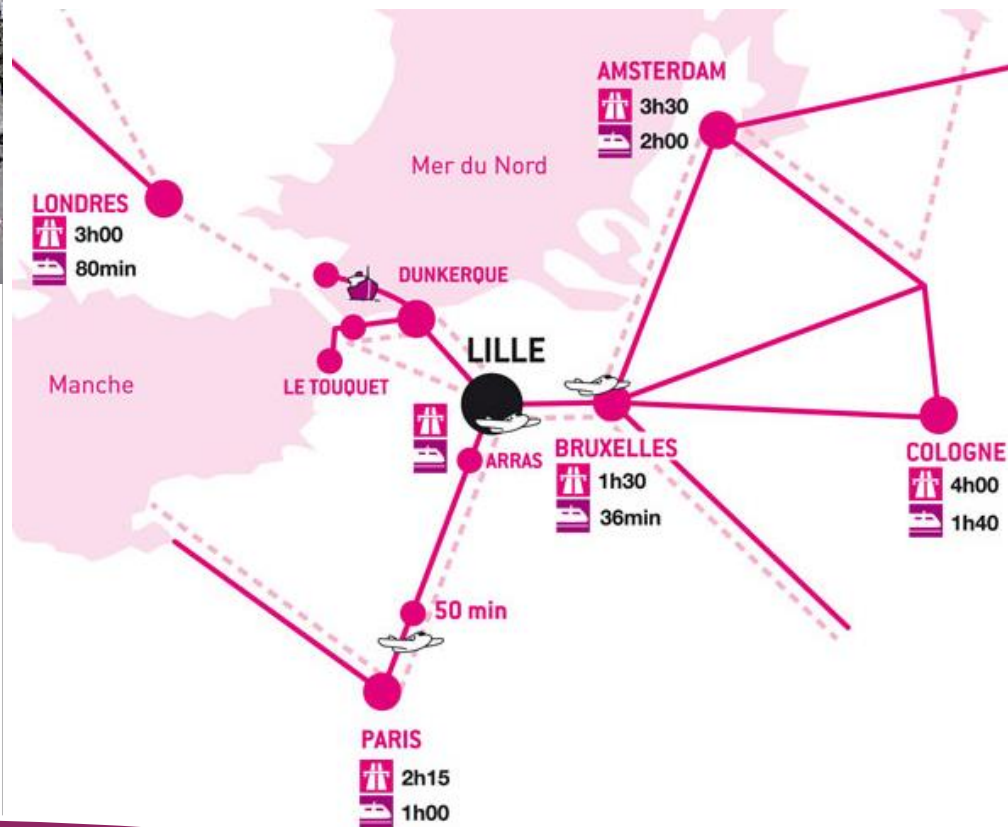
As a rule of thumb, Arts et Métiers ParisTech admits students with a very high academic level, but the selection is not made according to financial predispositions. This year again, the tuition fees (incl. insurance taxes) for the Master KIMP-APS were **less than 500€**.

Also, please note that an Erasmus partnership ensures that no tuition fee will be charged.

### STUDENTS FACILITIES

The campus of Lille is located near the city center, at a walking distance of every facility. Lille is the largest city in French Flanders, as well as a major cultural, architectural and artistic city. Very accessible by train and other public transports, Lille is 1.5 hour away from London, less than an hour away from Brussels and 1 hour away from Paris. A local residence can fit almost 200 students and several student restaurants are available in 5-minutes walk.

From the International Office to the local accommodation, not to mention the warm welcome by our strongly committed students, international students are well taken care of.



### Learn more:

> Programme Coordinator  
[adel.olabi@ensam.eu](mailto:adel.olabi@ensam.eu)

> International Office Lille  
[vianney.delespaux@ensam.eu](mailto:vianney.delespaux@ensam.eu)

> International Admissions  
[admissions@ensam.eu](mailto:admissions@ensam.eu)